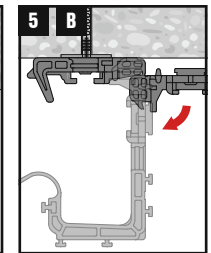
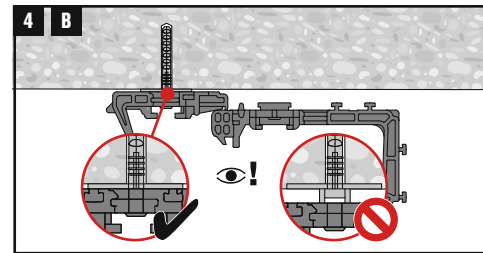
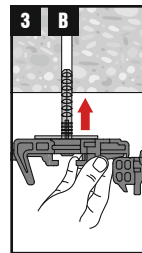
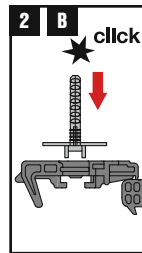
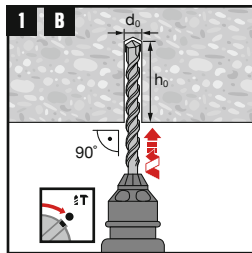
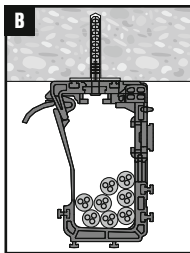
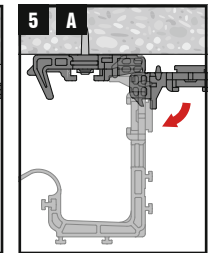
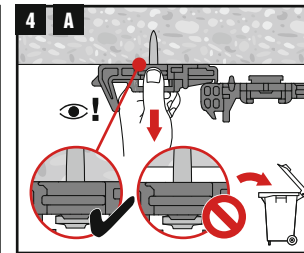
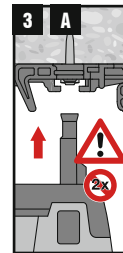
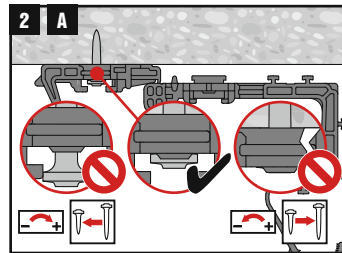
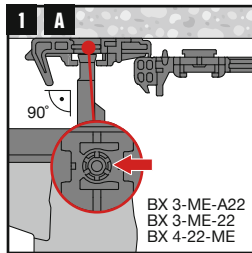
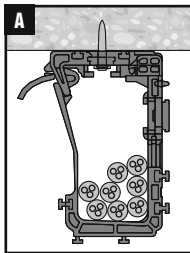
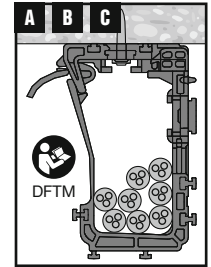
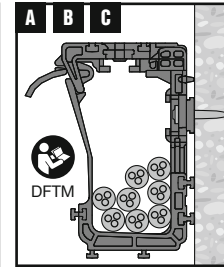
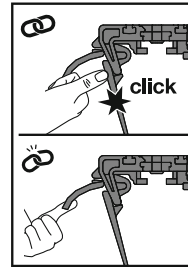
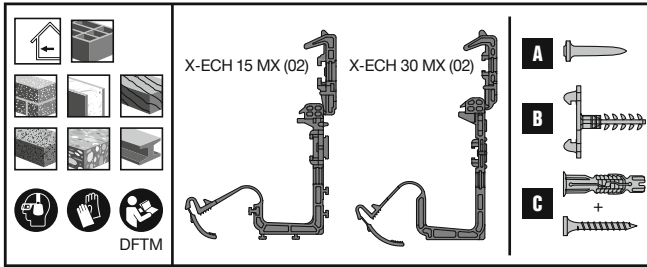




X-ECH 15 MX (02) X-ECH 30 MX (02)

2412596-06.2024

CE
16
Hilti AG, FL-9494 Schaan
Hilti-DX-DoP-005
ETA-16/0301
EAD 330083-04-0601
0672
Power-actuated fastener for
multiple use in concrete for
non-structural applications
www.hilti.group





X-ECH 15 MX (02)
X-ECH 30 MX (02)

